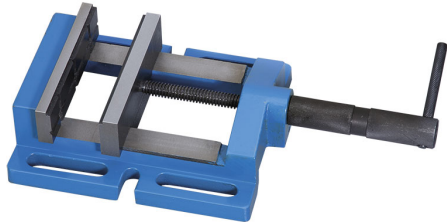


EQUIPPED WITH A PRISMATIC JAW AND A SMOOTH JAW. CONSTANT OVERALL LENGTH THANKS TO THE SCREW INSERTED IN THE HANDLE.



Jaws	100 mm
Opening	80 mm g
Base dimensions	182 x 156 mm
Net weight	4 kg
Packaging dimensions	295x170x75 h mm
Gross weight	4,34 kg
EAN Code	8012667183325



Box



Cast Iron