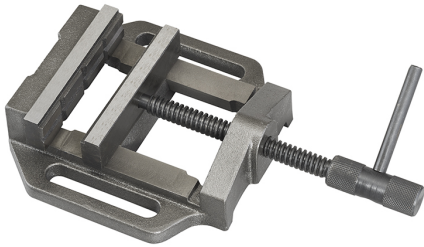


EQUIPPED WITH A PRISMATIC JAW AND A SMOOTH JAW.



<b>Jaws</b>	100 x 25,5 mm
<b>Opening</b>	85 mm g
<b>Base dimensions</b>	160 x 155 mm
<b>Net weight</b>	2,5 kg
<b>Packaging dimensions</b>	180x65x250 h mm
<b>Gross weight</b>	2,72 kg
<b>EAN Code</b>	8012667002138



Box



Cast Iron