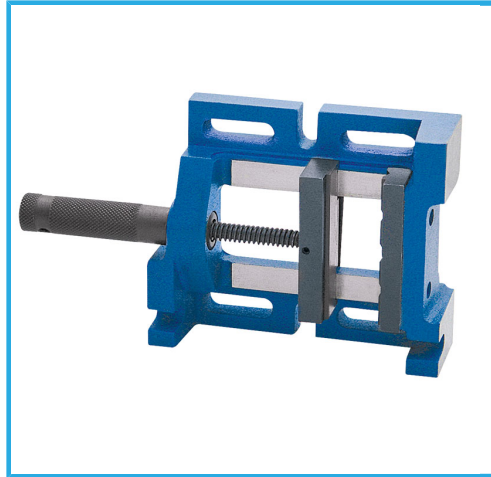
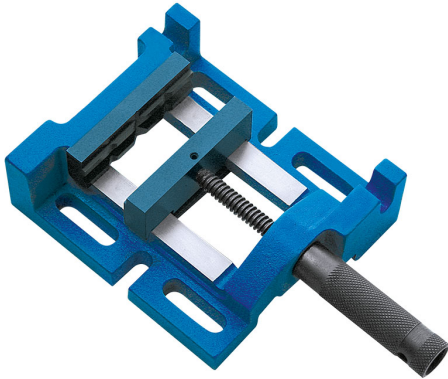


EQUIPPED WITH A PRISMATIC AND A SMOOTH JAW, CONSTANT OVERALL LENGTH THANKS TO THE SCREW INSERTED IN THE HANDLE. ADJUSTED TO 3...



<b>Jaws</b>	75 mm
<b>Jaw height</b>	30 mm
<b>Opening</b>	70 mm g
<b>Base dimensions</b>	150 x 142 mm
<b>Net weight</b>	3 Kg
<b>Gross weight</b>	3,19 kg
<b>Packaging dimensions</b>	245x160x85 h mm
<b>EAN Code</b>	8012667408329



Box



Cast Iron