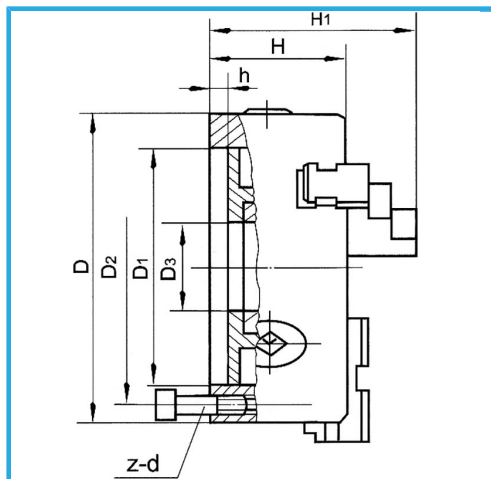


SINGLE GUIDE. INTEGRAL JAWS, CONCENTRIC CLAMPING, EQUIPPED WITH 1 SERIES CONSISTING OF 3 INTERNAL JAWS, 1 SERIES CONSISTING OF 3..



D1	63,513 mm
D2	82,6 mm
D3	40 mm
H1	100,5 mm
H	71 mm
h	13 mm
z-d	3-M10 mm
Spanner square	10 mm
A - A1	3 - 55 mm
B - B1	50 - 160 mm
C - C1	55 - 145 mm
Net weight	10,6 kg
Gross weight	11,00 kg
Packaging dimensions	-
EAN Code	8012667397852



Box



Wooden Box



Cast Iron



55029