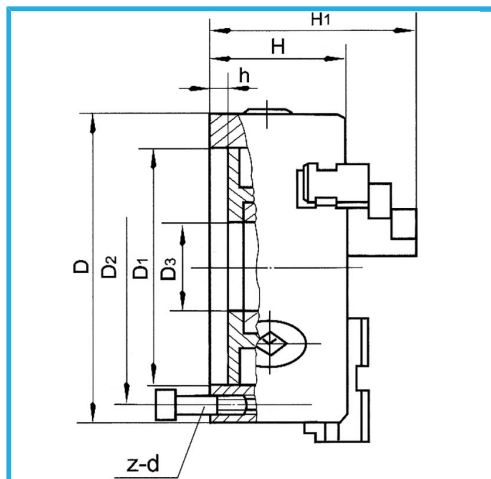


SINGLE GUIDE. INTEGRAL JAWS, CONCENTRIC CLAMPING, EQUIPPED WITH 1 SERIES CONSISTING OF 3 INTERNAL JAWS, 1 SERIES CONSISTING OF 3..



D1	82,563 mm
D2	104,8 mm
D3	70 mm
H1	139 mm
H	95 mm
h	15 mm
z-d	6-M12 mm
Spanner square	12 mm
A - A1	6 - 110 mm
B - B1	80 - 250 mm
C - C1	90 - 250 mm
Net weight	32 kg
Gross weight	1,86 kg
Packaging dimensions	-
EAN Code	8012667397883



Box



Wooden Box



Cast Iron